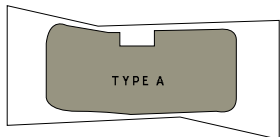
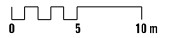


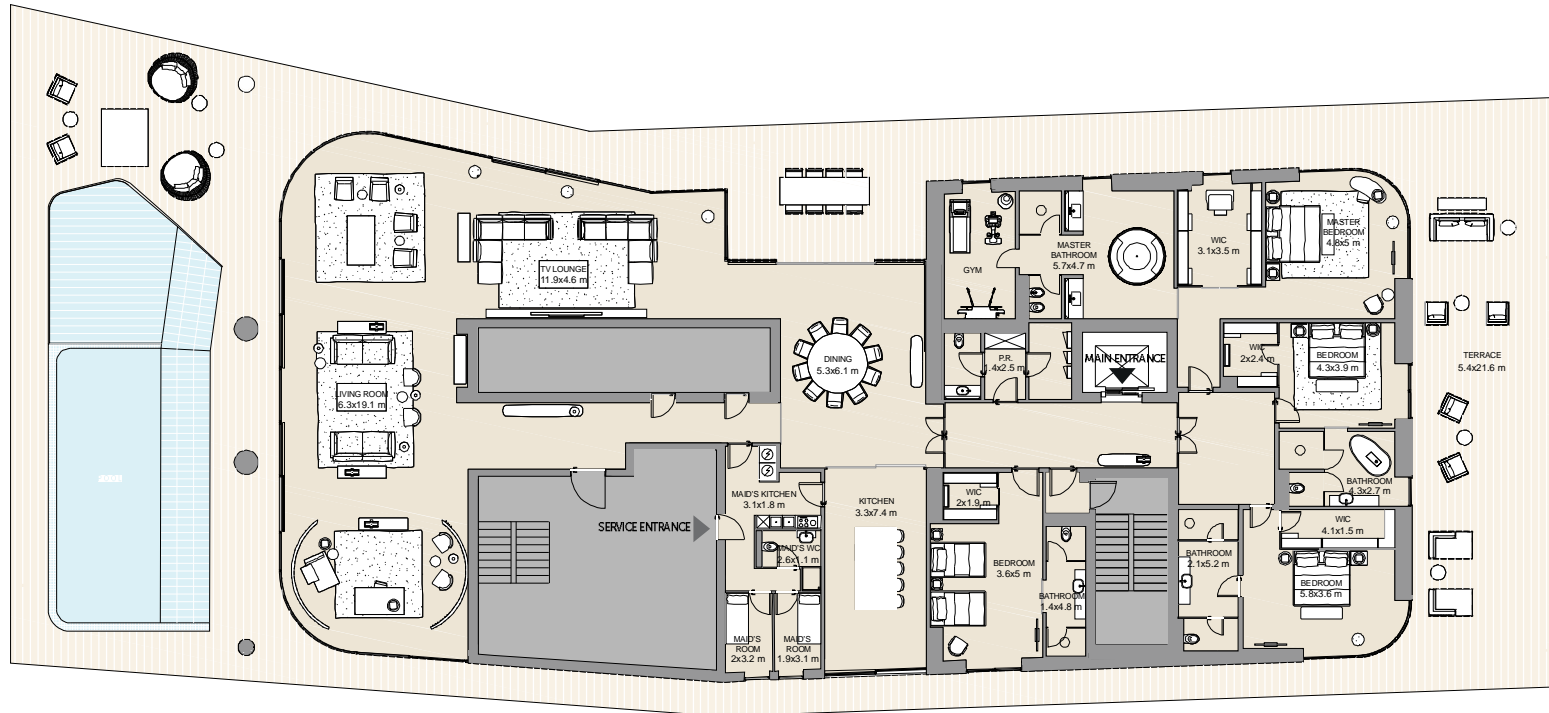
FLOOR SHAPE



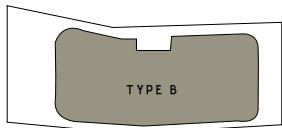
UNITS	NET AREA	BALCONY	TOTAL
1	6,578 sq. ft.	7,768 sq. ft.	14,346 sq. ft.

TYPE A - VIEW
BLOCK 6 - SEA + CITY + MARINA VIEW



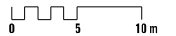


FLOOR SHAPE

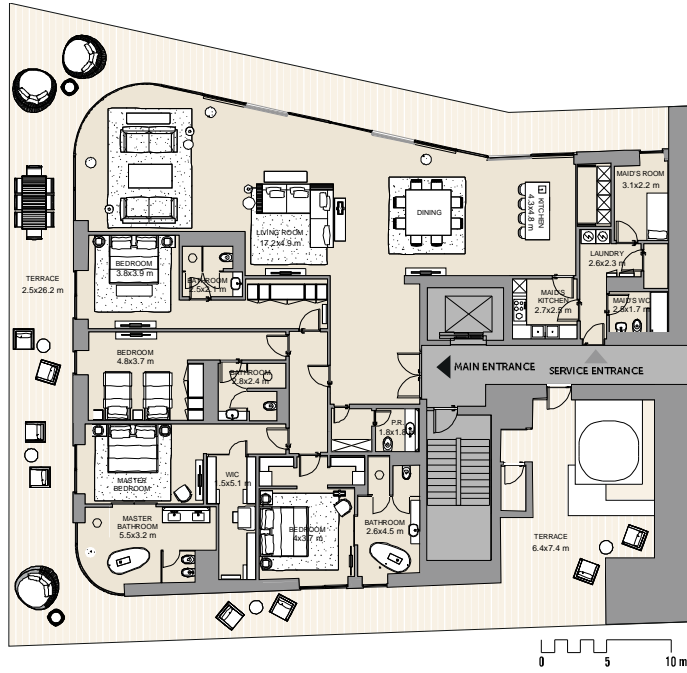


UNITS	NET AREA	BALCONY	TOTAL
3	6,616 sq. ft.	5,506 sq. ft.	12,122 sq. ft.

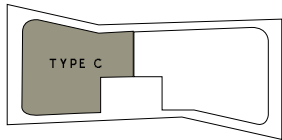
TYPE B - VIEW
BLOCK 1, 3 & 5 - SEA + CITY + MARINA VIEW



4 BEDROOM PENTHOUSE TYPE C
BLOCK 2 & 4 - LEVELS 7

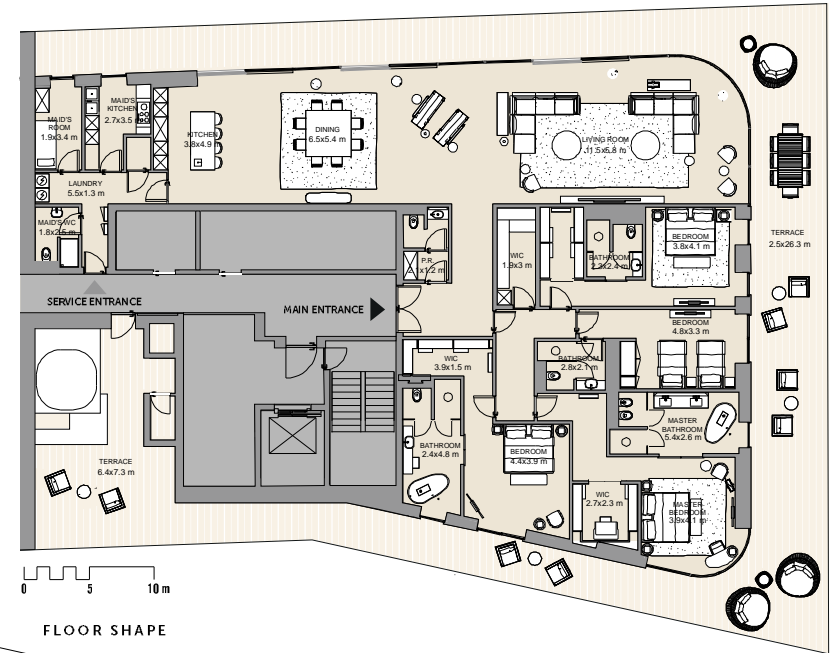


FLOOR SHAPE

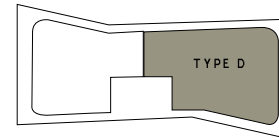


UNITS	NET AREA	BALCONY	TOTAL	TYPE C - VIEW
2	3,963 sq. ft.	2,574 sq. ft.	6,537 sq. ft.	BLOCK 2 & 4 - SEA + CITY VIEW

4 BEDROOM PENTHOUSE TYPE D
BLOCK 2 & 4 - LEVELS 7



FLOOR SHAPE



UNITS	NET AREA	BALCONY	TOTAL	TYPE D - VIEW
2	4,166 sq. ft.	2,776 sq. ft.	6,942 sq. ft.	BLOCK 2 & 4 - SEA + CITY + MARINA VIEW